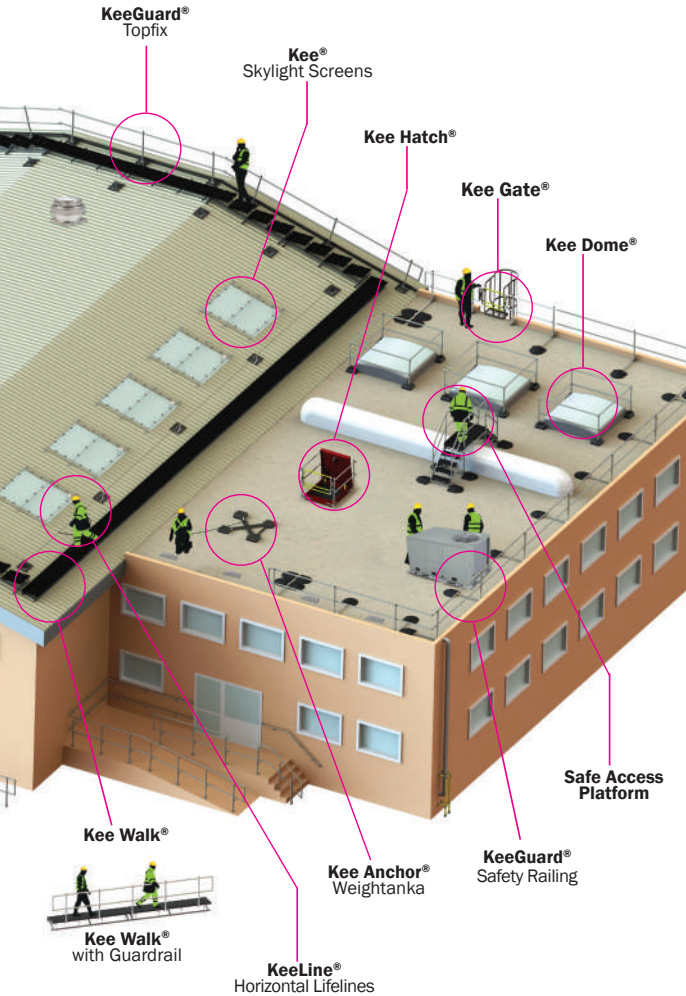


Using an Integrated Solution

A Complete Rooftop Fall Protection System

Only Kee Safety offers a solution-designed proposal using products that:

- Will not puncture your roof, cause roof leaks, or void your roof warranty
- Are third-party tested to meet OSHA and ANSI Standards
- Are extremely long-lasting (20-30 year life expectancy)
- Use a component-based systems for easy set up
- Can be easily installed by your crew or local contractor



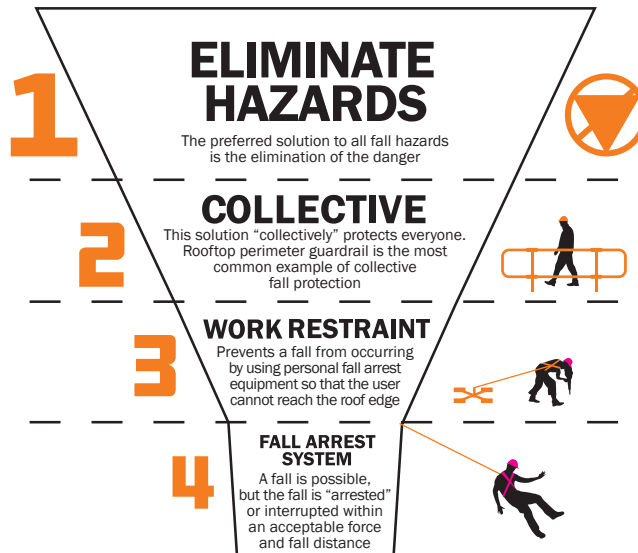
SAFETY

The Hierarchy of Fall Protection

Smarter Solutions for Rooftop Safety

A truly comprehensive rooftop solution follows the Hierarchy of Fall Protection, the gold-standard of safety procedures. An expert starts by inspecting the roof site for potential fall hazards. From there, a complete system solution and recommendations that descend the four levels of the hierarchy—from simple, sensible approaches for eliminating risks all the way down to lifesaving personal protection systems.

Collective Systems require no additional training to use. Work Restraint and Fall Arrest Systems both require a high level of user competency, training and additional inspection to be used effectively.



Please contact one of our qualified Fall Protection Experts to schedule a rooftop safety assessment today!



Advanced Roofing Headquarters

1950 NW 22nd Street | Fort Lauderdale, FL 3331
Toll-Free: (800) 638-6869 | Direct: 954-522-6868

Web site: www.advancedroofing.com

We are Available State-Wide!

Miami | Jupiter-Palm Beaches | Fort Myers-Naples
Tampa-St. Pete | Sanford-Orlando | Jacksonville



Rooftop Fall Protection Solutions



- WORK WITH OUR FALL PREVENTION EXPERTS TO PERFORM A ROOFTOP SAFETY AUDIT
- RECOGNIZE HAZARDS THAT EXIST ON THE ROOF
- LEARN ABOUT KEE SAFETY SYSTEMS THAT PREVENT THE RISK OF FALL
- IMPROVE WORKER SAFETY WITH SOLUTIONS THAT EXCEED OSHA COMPLIANCE

Kee Klamp, Kee Lite, Kee Stainless, KeeGuard, Kee Dome, Kee Hatch, Kee Mark, Kee Access, Kwik Kit, Kee Anchor, Weightanka, Wireanka, Kee Line, Kee Walk and Kee Projects are all registered trademarks of Kee Safety Ltd. Beam Clamp, and Box Bolt are all registered trademarks of Access Technologies Ltd, a subsidiary of Kee Safety International Ltd. While every effort has been made to ensure the accuracy of the information contained in this brochure, Kee Safety, Inc cannot be held responsible for any errors or omissions. Kee Safety, Inc reserves the right to alter or withdraw products without prior notice. Kee Safety, Inc does not accept responsibility for any loss or damage arising from improper use of its products. Copyright 2020 Kee Safety, Inc. All Rights Reserved.



ACCESS

OSHA Code: 1910.28(b)(3)(iv)

Danger Zone 1: Roof Access

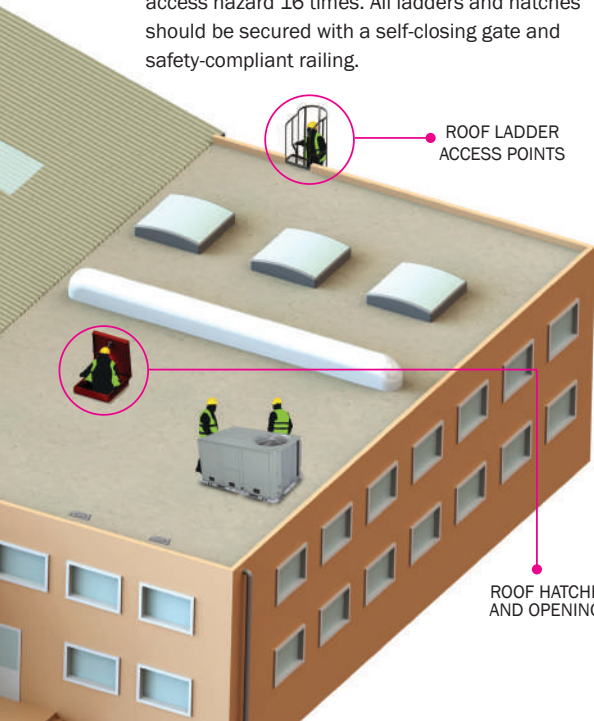
Understand how workers get on and off the rooftop

When climbing up onto the rooftop to perform maintenance tasks and when exiting the work zone, there is a high potential to slip or fall. Providing safe egress and ingress for workers on the rooftop is critical for OSHA compliance.



1 Access Points

Access points are the most frequented hazard on any roof. Your workers are exposed to this risk twice every time they enter and exit to perform tasks. For example, if your worker is required to access the roof 8 times per year, they are exposed to the access hazard 16 times. All ladders and hatches should be secured with a self-closing gate and safety-compliant railing.



ROOF HATCHES AND OPENINGS

ROOF LADDER ACCESS POINTS

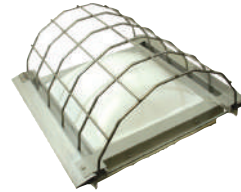
OPENINGS

OSHA Code: 1910.28(b)(3)(i)

Danger Zone 2: Holes in the Roof

Skylights

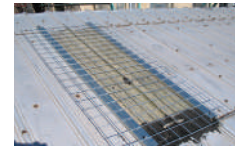
Skylights present a danger for any individual on the rooftop. OSHA considers skylights to be the equivalent of a hole in the roof. Every skylight opening and roof hole must be guarded by a standard skylight screen or a fixed standard railing on all exposed sides.



Kee® Skylight Screen Curb Style



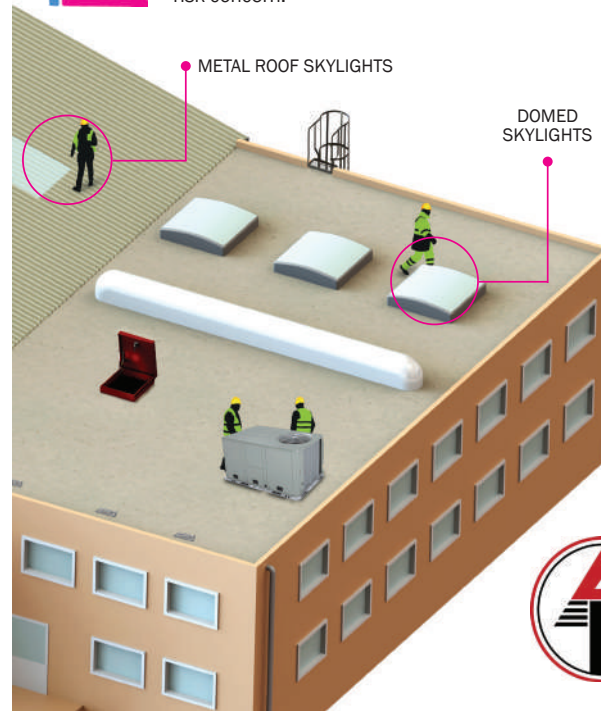
Kee Dome®



Kee® Skylight Screens

2 Rooftop Openings

Openings are often overlooked, but extremely critical to protect. A worker traversing the middle of the roof has a false sense of security when working far from the roof edge. If workers are carrying equipment, or focused on the job at hand, it is easy to misstep and fall through an opening. Statistically, in the USA, more people fall through skylights than over the edge of the roof*, which is why Kee Safety evaluates all rooftop openings as a serious risk concern.



METAL ROOF SKYLIGHTS

DOMED SKYLIGHTS

* Bureau of Labor Statistics: Census of Fatal Occupational Injuries Summary, 2017



EDGES

OSHA Code: 1910.28(b)(43)

Danger Zone 3: Roof Edges

Protecting the Perimeter

When access to the entire roof is authorized, the safest, most comprehensive solution is a perimeter railing system that surrounds and protects all roof edges.



KeeGuard® Safety Railing



KeeGuard® Contractor



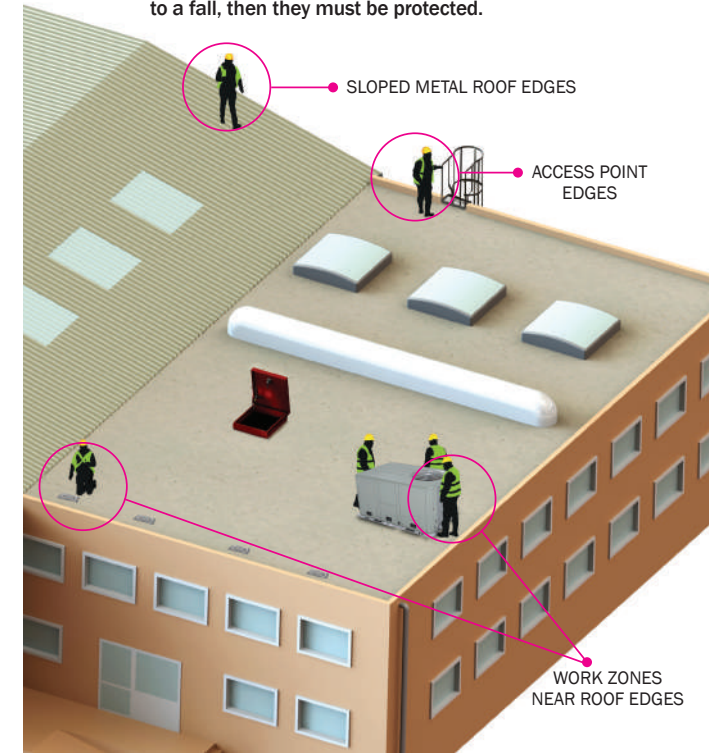
KeeGuard® TopFix



KeeGuard® FoldShield

3 Unprotected Edges

The edge of the roof is the most visible hazard, and typically the hazard most people want to protect first. Proximity to the roof edge is a significant factor in identifying the probability of an accident occurring. OSHA Code states that if a worker can be exposed to a fall, then they must be protected.



SLOPED METAL ROOF EDGES

ACCESS POINT EDGES

WORK ZONES NEAR ROOF EDGES